



**West End, Queensbury,**

**£199,950**

**\*\* END TOWN HOUSE \*\* THREE BEDROOMS PLUS OCCASIONAL ROOM \*\* WELL PRESENTED \*\***

**\*\* OFF STREET PARKING \*\* FRONT & REAR GARDEN \*\***

**\*\* MUST BE VIEWED TO APPRECIATE ACCOMMODATION ON OFFER!! \*\***

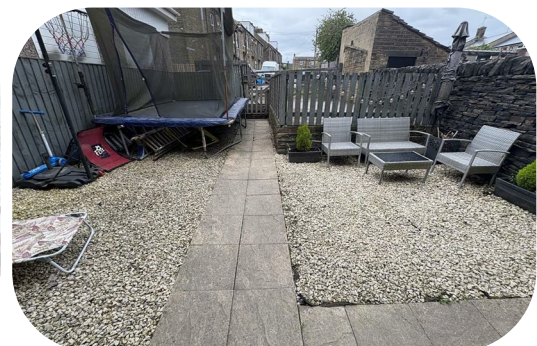
This well presented three bedroom + occasional room property would make an ideal purchase for a number of buyers.

The property has been updated by the current owners and offers a blend of old and new.

Benefits from a multi fuel fire, gas central heating and double glazing.

Within easy reach of amenities, shops and a choice of first and secondary schools.

To the outside there is a garden to front and rear with off street parking to the rear.





**MUST BE VIEWED TO APPRECIATE ACCOMMODATION ON OFFER!!**  
 This well presented three bedroom + occasional room property would make an ideal purchase for a number of buyers.  
 The property has been updated by the current owners and offers a blend of old and new.  
 Benefits from a multi fuel fire, gas central heating and double glazing.  
 Within easy reach of amenities, shops and a choice of first and secondary schools.  
 To the outside there is a garden to front and rear with off street parking to the rear.

### Entrance

### Lounge

17'0" x 14'0" (5.18m" x 4.27m")  
 Multi fuel fire set in chimney breast and radiator.

### Dining Kitchen

13'8" x 12'4" (4.17m" x 3.76m")  
 White fitted kitchen having a range of wall and base units incorporating stainless steel sink unit, oven & hob with extractor, plumbing for auto washer, radiator, electric fire, understairs storage and door leading to rear.

### Cellar

Useful storage.

### First Floor Landing

### Bedroom One

8'7" x 12'3" (2.62m" x 3.73m")  
 Radiator.

### Occasional Room

8'0" x 10'9" (2.44m" x 3.28m")  
 Radiator.

### Bedroom Two

8'8" x 10'1" (2.64m" x 3.07m")  
 Radiator.

### Bedroom Three

13'7 x 6'5" (4.14m x 1.96m")  
 Radiator.

### Bathroom

Three piece suite comprising panel bath, low flush wc, pedestal wash basin and radiator.

### Exterior

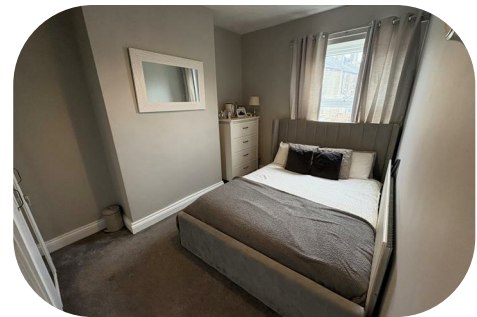
Outside there is off street parking to the rear, together with front and back gardens.

### Council Tax Band

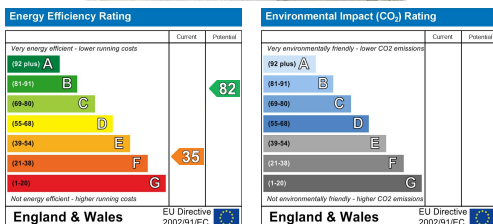
B

### Tenure

FREEHOLD.



**Agent Notes & Disclaimer** We endeavour to make our particulars fair, accurate and reliable. The information provided does not constitute or form part of an offer or contract, nor may it be regarded as representation. All interested parties must verify accuracy and your solicitor must verify tenure/lease information, fixtures & fittings and, where the property has been extended/converted, planning/building regulation consents. All dimensions are approximate and for guidance only, as are floorplans which are not to scale, and their accuracy cannot be confirmed. Reference to appliances and/or services does not imply that they are necessarily in working order or fit for purpose. We strongly advise prospective buyers to commission their own survey or service reports before finalising their offer to purchase. **Money Laundering Regulations** Intending purchasers will be asked to produce identification and proof of finance. We would ask for your co-operation in order that there will be no delay in agreeing a sale. We are covered and members of The Property Ombudsman.



8 The Green, Idle, Bradford, West Yorkshire, BD10 9PR Tel 01274 619999 email [idle@sugdensesstates.co.uk](mailto:idle@sugdensesstates.co.uk)  
 44 High Street, Queensbury, Bradford, West Yorkshire, BD13 2PA Tel 01274 888998 email [queensbury@sugdensesstates.co.uk](mailto:queensbury@sugdensesstates.co.uk)  
 13 Bradford Road, Cleckheaton, BD19 5AG Tel 01274 905905 email [cleckheaton@sugdensesstates.co.uk](mailto:cleckheaton@sugdensesstates.co.uk)  
 website [www.sugdensesstates.co.uk](http://www.sugdensesstates.co.uk)

